

**CALIFORNIA HEAT**  
HEATED CLOTHING



# WHAT MAKES US SPECIAL?

Family-owned & operated in Maryland, known for goofy dad jokes and outstanding customer service



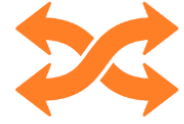
## **LIFETIME WARRANTY**

We stand by our products with a lifetime warranty on the Finewire™ heating elements & clothing plugs



## **NO BUTTONS ALLOWED**

Temperature controllers are separate from the clothing because when heat control buttons on clothes fail outside of your warranty, you're left in the cold



## **MIX & MATCH**

We use plugs common to the industry plus have adapters to make our gear compatible with many other brands



## **DON'T CUT CORNERS**

One of the only companies with gloves heating both sides of the hand and socks heating the entire foot



## **CARBON = BAD**

Competitor's carbon wire & coatings break down over time, but our unique tech uses the most durable & long-lasting materials for a lifetime of heat



## **EXTENDED SIZES**

Our sizes range from 2XS - 5XL, keeping everyone warm whether they are petite & small or big & tall



## **QUALITY CLOTHING**

We invest in only the best materials including Cordura®, Thinsulate™, Kevlar®, Hipora® and Ripstop Nylon



## **ENFORCED MAP POLICY**

Whether you are big or small, we want all our partners to have an equal opportunity to succeed, both online & in their stores



## **YEAR-ROUND R&D**

New heated products and improvements are constantly being researched, developed & released all year

## **WE ♥ FEEDBACK**

Communication is the key to success - Consumers, resellers & partners are encouraged to share insight on product improvements, positive experiences, new products, & educational materials.

You are the voice of Heated Clothing & California Heat!

## ABOUT CALIFORNIA HEAT

After accumulating over 20 years of combined experience working for the industry's leading heated clothing manufacturer, the families realized people needed a quality, affordable brand they could trust. A clothing line was designed that incorporated the most cutting-edge technology and superior craftsmanship, confidently backed by a Lifetime Warranty. By listening to customer feedback for what they needed in a heated brand, then combining it with a passionate belief in personable customer care...California Heat was born.



## FINEWIRE™ HEATING ELEMENTS & PLUGS

Finewire™ heating elements are hundreds of highly conductive microfibers bundled with heavy-duty coating then interwoven into fabric. This unique craftsmanship separates us from other brands that use less durable materials like carbon wires, which easily break down over time. Our unique design produces an extremely durable product that heats faster and lasts longer, ensuring comfortable warmth during any cold weather activity.

## PRODUCT WARRANTIES

- 1 Year - Manufacturer Defects and Workmanship
- 90 Days - All Batteries
- 2 Years - All Controllers
- **Lifetime Warranty - Heating Elements AND Plugs**

# HOW IS HEATED CLOTHING POWERED?

	7V GEAR	12V GEAR
<b>MAIN POWER SOURCE</b>	Each product includes a small, rechargeable 7V lithium-ion battery	Connect to a 12V power source using a Battery Harness, 12V Accessory Plug, SAE to Coax Female, or RCA to Coax Female
<b>ADDITIONAL POWER OPTIONS</b>	Connect to a 12V power source using the Hybrid Controller	12V 7000mAh Portable Battery
<b>HEAT REGULATION</b>	A 4-stage controller built into the 7V battery	Choice of multiple controllers based on the rider's needs & budget
<b>DO PRODUCTS CONNECT TOGETHER?</b>	NO Each product uses its own 7V battery, except when using a y-harness with gloves or socks	YES Each piece can be used independently or connect multiple clothing items together
<b>TYPICAL CUSTOMERS</b>	Anyone Outdoors - hunters, snow lovers, workers, first responders, athletes  Those with circulatory issues - arthritis, Raynaud's Disease	Motorcyclists, snowmobile riders, powersport enthusiasts, bus drivers, helicopter pilots, outdoor machinery operators



7V Battery



12V Battery Harness



12V Accessory Adapter



12V SAE to Coax Female



Hybrid Controller



12V RCA to Female Coax

# 7V BATTERY-POWERED CLOTHING

## COMMON QUESTIONS

### WHAT KIND OF BATTERY IS IT? WHY 7V AND NOT 5V WITH A USB CHARGER?

It is a rechargeable 7V Lithium-Ion battery available in both a 3500mAh and 2500mAh version. We use 7V instead of 5V because it allows us to increase the amount of heating element in our gear while still preserving long running times. More heating element equals more heat, and therefore a better quality product for our customers!

### HOW LONG WILL THE 7V BATTERY POWER MY CLOTHING & WHAT ARE THE SETTINGS?

The length of time ranges from 2-11 hours but depends on the specific product connected & temperature setting. For example, a vest is 2-8 hours, but a scarf is 3-10 hours.

The battery's built-in controller has 4 power levels to control the temperature output: 25%, 50%, 75%, 100%. The temperature output ranges from approximately 105°F to 135°F.

### HOW DO I CHARGE THE BATTERY & WHAT'S INCLUDED WITH THE CLOTHING?

The battery can be charged using our 7V Wall Charger or Car Charger. It typically takes 4-5 hours to fully charge a completely discharged battery (longer when simultaneously charging 2 batteries on a dual charger). All clothing comes with everything needed for operation.

	Batteries	Wall Charger	Y-Harness
Socks	2	Dual	Yes
Gloves	2	Dual	No
All Other Clothing	1	Single	No

### WHAT IS THE TYPICAL LIFESPAN OF A BATTERY?

When cared for properly, its lifespan is up to 500 charge cycles. To extend the life of your battery, maintain at least a 25% charge when not in use. Do not store it in extreme hot or cold environments for extensive lengths of time to avoid battery malfunction or decreased performance.

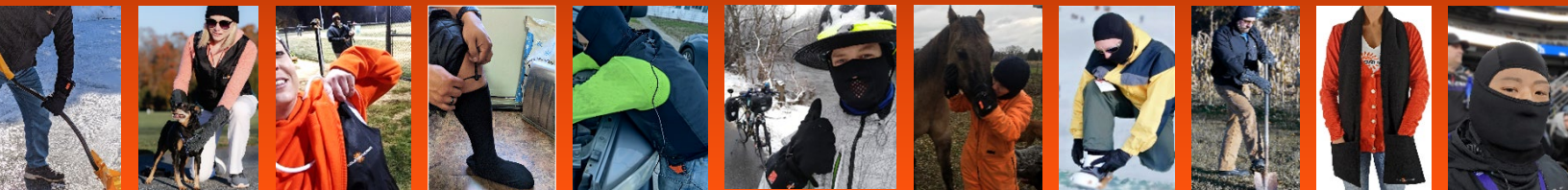
### WHAT IF THE 7V CLOTHING OR 7V BATTERY GETS WET?

The battery is built to be water-resistant and withstand most weather conditions. However, the battery is not meant to be submerged in water or other liquids. All our clothing wiring is sealed with a heavy-duty coating, so there is no risk if it gets wet.

### CAN I CONNECT MY 7V CLOTHING TO A 12V POWER SOURCE?

Yes! With the Hybrid Heat Controller, you can power 7V battery-powered heated gear using a motorcycle, powersport vehicle, or any 12V accessory port.

# 7V BATTERY HEATED GEAR



## 7V AFTERGLO JACKET

MSRP \$230

XS – 5XL

Heat Panels: Chest, Back, Base of Neck

**Unique Features:** Glow-in-the-dark zipper, removable hood, wind/waterproof softshell polyester fabric, fleece-lined hood & pockets



## 7V FLEECE HOODIE

MSRP \$200

XS – 3XL

Heat Panels: Chest, Back

**Unique Features:** Fleece with soft plush interior, large oversized hood, designed for comfort in temperatures above 30 degrees



## 7V HALF PINT

MSRP \$130

One Size

Heat Panels: Chest, Back, Neck

**Unique Features:** Mid-layer hyper focused on upper torso warmth, full neck protection



## 7V Heated vest

MSRP \$130

2XS – 5XL

Heat Panels: Chest, Back

**Unique Features:** Extremely thin ripstop nylon, expandable side panels, comes in dual sizes



## RV HEATED SOCKS

MSRP \$175

XS – 2XL

**Heat Panels:** Top & Bottom, Wrapping The Toes

**Unique Features:** Thin, lightweight moisture-wicking Lycra spandex, wide elastic band with a Velcro strap for a comfortable fit around all calf sizes



## RV ACTIVEFLEX GLOVES

MSRP \$185

2XS – 3XL

**Heat Panels:** Front & Back, Wrist to Fingertips

**Unique Features:** Wind/waterproof polyester with leather palm, touchscreen compatible, double layered to reinforce areas on palm



## RV FLEECE HEADBAND

MSRP \$75

One Size

**Heat Panels:** Large Panels Across Both Ears

**Unique Features:** 2-way stretch microfleece allows it to fit most head sizes



## RV BALACLAVA FACE MASK

MSRP \$90

One Size

**Heat Panels:** Large Panels Across Both Ears

**Unique Features:** Thin, lightweight 4-way stretch nylon spandex, pivot from face mask to open balaclava

## *RV OMNIWRAP HEAT THERAPY*

**MSRP \$100**

**One Size**

**Heat Panels:** Large Rectangular Panel

**Unique Features:** Abrasion-resistant Cordura for optimal support, expandable elastic straps, adjustable Velcro closure



## *RV TRINITY SCARF*

**MSRP \$90**

**One Size**

**Heat Panels:** Inside Each Pocket, Neck

**Unique Features:** Waterproof nylon fleece, Thinsulate insulating each large pocket



# 7V BATTERY GEAR ACCESSORIES



Hybrid Heat Controller - 7V to 12V Converter

**\$60.00**



7V Rechargeable Battery - 3500mAh

**\$45.00**



7V Rechargeable Battery - 2500mAh

**\$39.00**



7V Single Battery Wall Charger

**\$15.00**



7V Dual Battery Wall Charger

**\$20.00**



7V Dual Battery Car Charger

**\$20.00**



7V Battery 3.5ft Extension

**\$15.00**



7V Y-Harness Cable

**\$15.00**

# 12V POWERSPORT CLOTHING

## COMMON QUESTIONS

### HOW DO I CONNECT MY 12V HEATED CLOTHING?

There are multiple power adapter choices to connect to a 12V power source:

#### 12V BATTERY HARNESS

The battery harness connects directly to the positive & negative terminals of your battery. It includes a 15A fuse, which can handle the draw of an entire heated clothing outfit.

#### 12V ACCESSORY PLUG / BMW PLUG

The accessory plug works with a standard 12V DC outlet, commonly found on vehicles including cars, buses, boats, tractors, and more. Remove the red cap and it becomes a DIN plug that works on BMW motorcycles and other vehicles using that type of power port. Max capacity 8A.

#### 12V SAE TO COAX - FEMALE

The SAE to coax female connects directly to a battery tender cable, however, the fuse in the battery tender of many vehicles is only 3-5 amps. Therefore, you MUST replace it with a 15A fuse to handle the draw of an outfit. If you opt to connect via SAE, we recommend no longer using it as a battery tender to avoid a malfunction resulting in damage to your battery.

#### 12V RCA TO COAX - FEMALE

The RCA Adapter allows you to power your heated gear using snowmobiles or other vehicles that have an RCA port. It can also be used with the heated visor plug installed on your vehicle.



**WARNING:** With all methods of connecting, a temperature controller should ALWAYS be used. A controller regulates the heat output to make sure you ride comfortably and safely. Without a controller, you will experience a constant temperature of at least 135°F.

### CAN MY 12V ELECTRICAL SYSTEM HANDLE THE DRAW?

Refer to your owner's manual to look up the wattage of your vehicle's 12V electrical system. Refer to the chart for the total draws of each piece of heated gear. The 15A fuse already included with the battery harness will easily handle an entire heated clothing outfit.

	Gloves (per pair)	Socks (per pair)	Jacket	Pants
Amp Draw	2.4	2.4	6.4	4.6
Watts	27	27	77	55

### HOW DO I CONNECT 2 PEOPLE TO THE SAME 12V POWERSPORT VEHICLE?

Each person must have a separate temperature controller and power adapter (Battery Harness, Accessory Plug, RCA, or SAE). Using only one controller & power connection may overload your battery or the controller and could result in damage to the products, cause them to malfunction, and/or cause bodily harm.

### WHAT IF THE 12V CLOTHING OR ACCESSORIES GET WET?

All our clothing wiring is sealed with a heavy-duty coating and products are built to withstand most weather conditions, so there is no risk if it gets wet.

# 12V Connection Diagram

**Jacket → Glove Connection**



**Jacket Accessory Port**  
Connect to Pants or Sock Y-Harness

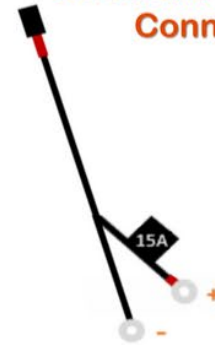
**Jacket → Controller Connections**



**Pant → Sock / Insoles Connection**



**Controller → Harness Connection**



Connect to Battery



## Gloves & Socks

Can Be Used Independently With a Y-Harness

## Socks

Can Be Connected to Pants or Directly to Jacket Using Y-Harness

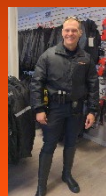
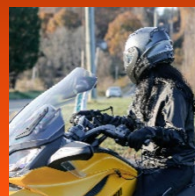
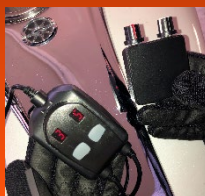
## Controllers

Heat 1-2 Zones Independently Based on Controller Attached



Any piece of heated clothing can be operated independently by connecting directly to a temperature controller

# 12V POWERSPORT HEATED GEAR



## 12V JACKET LINER

MSRP \$230

2XS – 5XL + Tall Sizes

Heat Panels: Chest, Back, Collar, Sleeves

**Unique Features:** Mid-layer meant to be worn over a thin base layer, made of wind/water-resistant ripstop nylon, built-in plugs to connect gloves & pants



## 12V PANT LINERS

MSRP \$190

2XS – 4XL

Heat Panels: Around The Hips & Down Front of Legs

**Unique Features:** Mid-layer meant to be worn over a thin base layer, made of wind/water-resistant ripstop nylon, built-in plugs to connect socks & jacket



## 12V STREETRIDER JACKET

MSRP \$400

S – 5XL

Heat Panels: Chest, Back, Collar, Sleeves

**Unique Features:** 4-Season outer jacket with removable heated liner, wind/waterproof Cordura shell with removable armor, plugs to connect gloves & pants



## 12V STREETRIDER PANTS

MSRP \$315

S – 4XL + Tall Sizes

Heat Panels: Around The Hips & Down Front of Legs

**Unique Features:** Wind/waterproof outer pants have a Cordura shell with removable knee armor, Thinsulate insulation, built-in plugs to connect socks & jacket



## **12V GUNTLET GLOVES**

**MSRP \$175**

**2XS – 3XL**

**Heat Panels:** Front & Back, Wrist to Fingertips

**Unique Features:** Wind/waterproof leather & nylon, touchscreen compatible, double layered to reinforce areas on palm, for riding in temperatures >0°F



## **12V LEATHER GLOVES**

**MSRP \$150**

**2XS – 3XL**

**Heat Panels:** Front & Back, Wrist to Fingertips

**Unique Features:** Wind/waterproof leather, touchscreen compatible, double layered to reinforce areas on palm, for riding in temperatures >30°F



## **12V SPORTFLEXx GLOVES**

**MSRP \$135**

**2XS – 3XL**

**Heat Panels:** Front & Back, Wrist to Fingertips

**Unique Features:** Wind/waterproof polyester & synthetic suede, touchscreen compatible, double layered to reinforce areas on palm, for riding in temperatures >30°F



## **12V HEATED SOCKS**

**MSRP \$100**

**XS – 2XL**

**Heat Panels:** Top & bottom, Wrapping The Toes

**Unique Features:** Thin, lightweight moisture-wicking Lycra spandex, wide elastic band with a Velcro strap for a comfortable fit around all calf sizes

# 12V TEMPERATURE CONTROLLERS



12V Temperature On/Off Switch

**\$18.00**



12V Junior Temp Controller [5A Max]

**\$40.00**



12V Single Dial Temp Controller

**\$60.00**



12V Dual Dial Temp Controller

**\$100.00**



12V Dual Digital Temp Controller

**\$80.00**



12V Wireless Remote (for Digital Controller)

**\$25.00**



Dual Controller Leather Case

**\$15.00**



Single Controller Leather Case

**\$15.00**

## Temperature Controller Comparison

### Junior

- Push button control with 4 power levels & lighted indicator
- Y-harness attached to controller
- Designed for 12V gloves or socks ONLY (handles 5A max)

### Dual Digital

- Push button controls with 10 power levels & digital display
- Control temperature of two or more clothing items individually
- Ability to pair with the wireless remote (sold separately)

### Single Dial

- Adjustable knob has 40 variable temperature stages
- Control temperature of one clothing item

### Dual Dial

- Adjustable knobs each have 40 variable temperature stages
- Control temperature of two or more clothing items individually

# 12V CABLES & HARNESSSES

## Options For Connecting Clothing To A 12V Power Source



12V Battery Harness

**\$13.00**



12V Accessory & BMW Plug

**\$20.00**



12V RCA to Coax - Female

**\$13.00**



12V SAE to Coax - Female

**\$13.00**

## Additional Accessories To Meet Each Rider's Needs



12V Battery - 7000mAh

**\$175.00**



12V Female Adapter Plugs

**\$11.00**



12V SAE to Coax - Male

**\$13.00**



12V Panel Mount Port

**\$20.00**



12V Splitter

**\$15.00**



12V - 18" Extension Cable

**\$15.00**



12V - 90° Coil Cord

**\$17.00**



12V Y-Harness

**\$15.00**



**RESELLERS & CORPORATE PARTNERSHIPS**

JoinTeamHeat@california-heat.com

**CUSTOMER SERVICE & TECH SUPPORT**

Support@california-heat.com

410-870-HEAT • STREET, MD

**WWW.CALIFORNIA-HEAT.COM**